



**India Meteorological Department
(Ministry of Earth Sciences)**

NATIONAL BULLETIN NO. 28 (BOB/06/2024)

TIME OF ISSUE: 0820 HOURS IST

DATED: 26.10.2024

FROM: INDIA METEOROLOGICAL DEPARTMENT (FAX NO. 24643965/24699216/24623220)

TO: CONTROL ROOM, NDM, MINISTRY OF HOME AFFAIRS (FAX.NO. 23093750)

CONTROL ROOM NDMA (FAX.NO. 26701729)

CABINET SECRETARIAT (FAX.NO.23012284, 23018638)

PS TO HON'BLE MINISTER FOR S & T AND EARTH SCIENCES (FAX NO.23316745)

SECRETARY, MOES (FAX NO. 24629777)

H.Q. (INTEGRATED DEFENCE STAFF AND CDS) (FAX NO. 23005137/23005147)

DIRECTOR GENERAL, DOORDARSHAN (23385843)

DIRECTOR GENERAL, AIR (23421105, 23421219)

PIB MOES (FAX NO. 23389042)

UNI (FAX NO. 23355841)

D.G. NATIONAL DISASTER RESPONSE FORCE (NDRF) (FAX NO. 26105912, 2436 3260)

DIRECTOR, PUNCTUALITY, INDIAN RAILWAYS (FAX NO. 23388503)

CHIEF SECRETARY, ODISHA (FAX NO. 0674-2536660)

CHIEF SECRETARY, WEST BENGAL (FAX NO. 033-22144328)

CHIEF SECRETARY, ANDAMAN & NICOBAR ISLANDS (FAX NO. 03192-232656)

CHIEF SECRETARY, ANDHRA PRADESH (FAX NO. 0863-2441029)

CHIEF SECRETARY, TAMIL NADU (FAX NO. 044-25672304)

CHIEF SECRETARY, PUDUCHERRY (FAX NO. 0413-2334145)

CHIEF SECRETARY, JHARKHAND (FAX NO. 0651-2400240)

CHIEF SECRETARY, BIHAR (FAX NO. 0612-2205800)

Subject: Well Marked Low Pressure Area (remnant of severe cyclonic storm "DANA") over north Odisha

The depression (remnant of severe cyclonic storm "DANA") over north Odisha moved slightly westwards during past 6 hours and weakened into a well marked low pressure area over the same region. It is likely to weaken further and become insignificant during next 12 hours.

Warnings: NIL

This is the last bulletin in association with this system. However, regular bulletins would continue from National Weather Forecasting Centre and concerned regional meteorological centre/state meteorological centres.

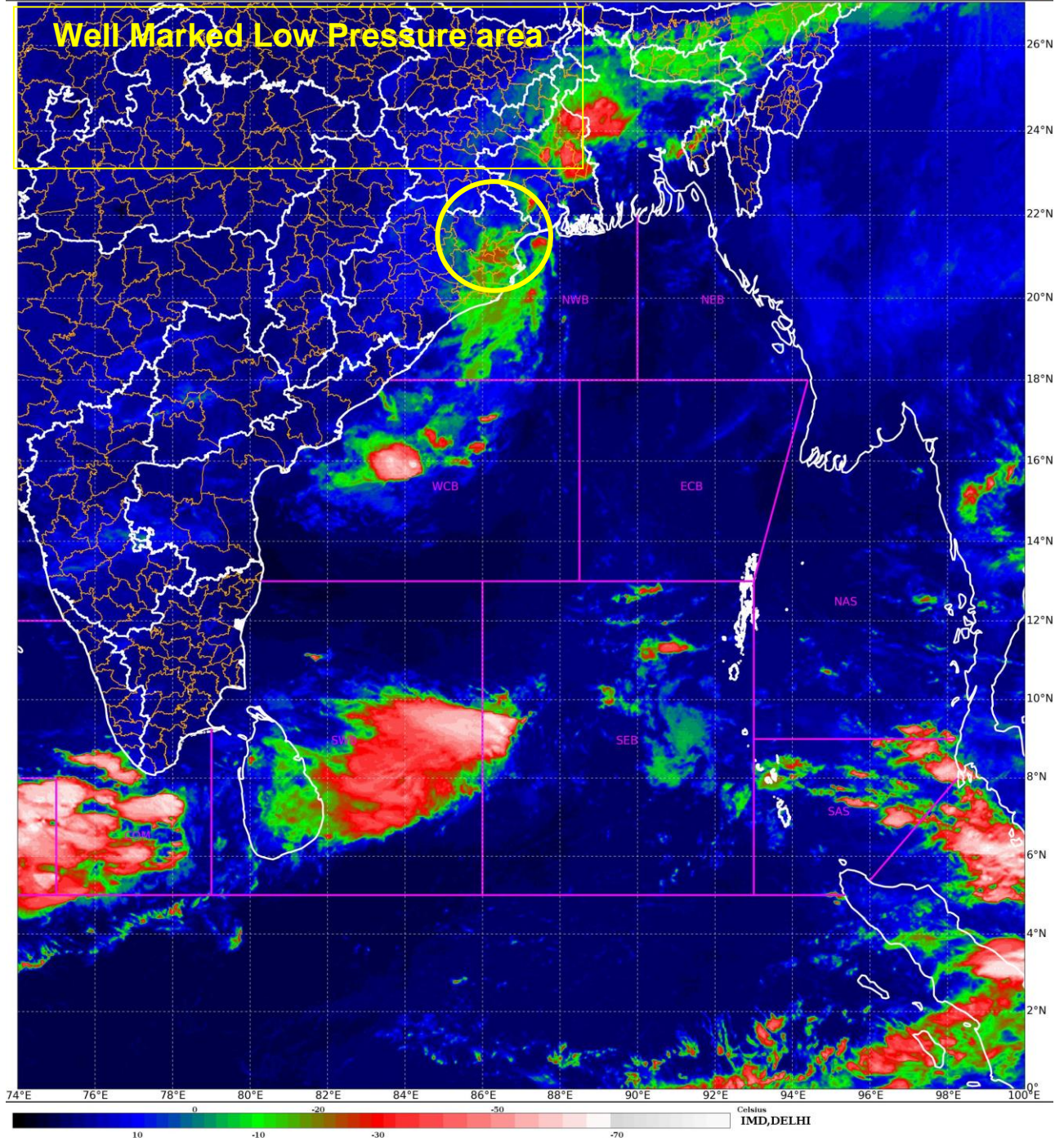
**(Shashi Kant)
Scientist-D, IMD, New Delhi**

Copy to: ACWC Kolkata/ACWC Chennai/CWC Bhubaneswar/CWC Vishakhapatnam/Meteorological Centre Port Blair/MC Ranchi

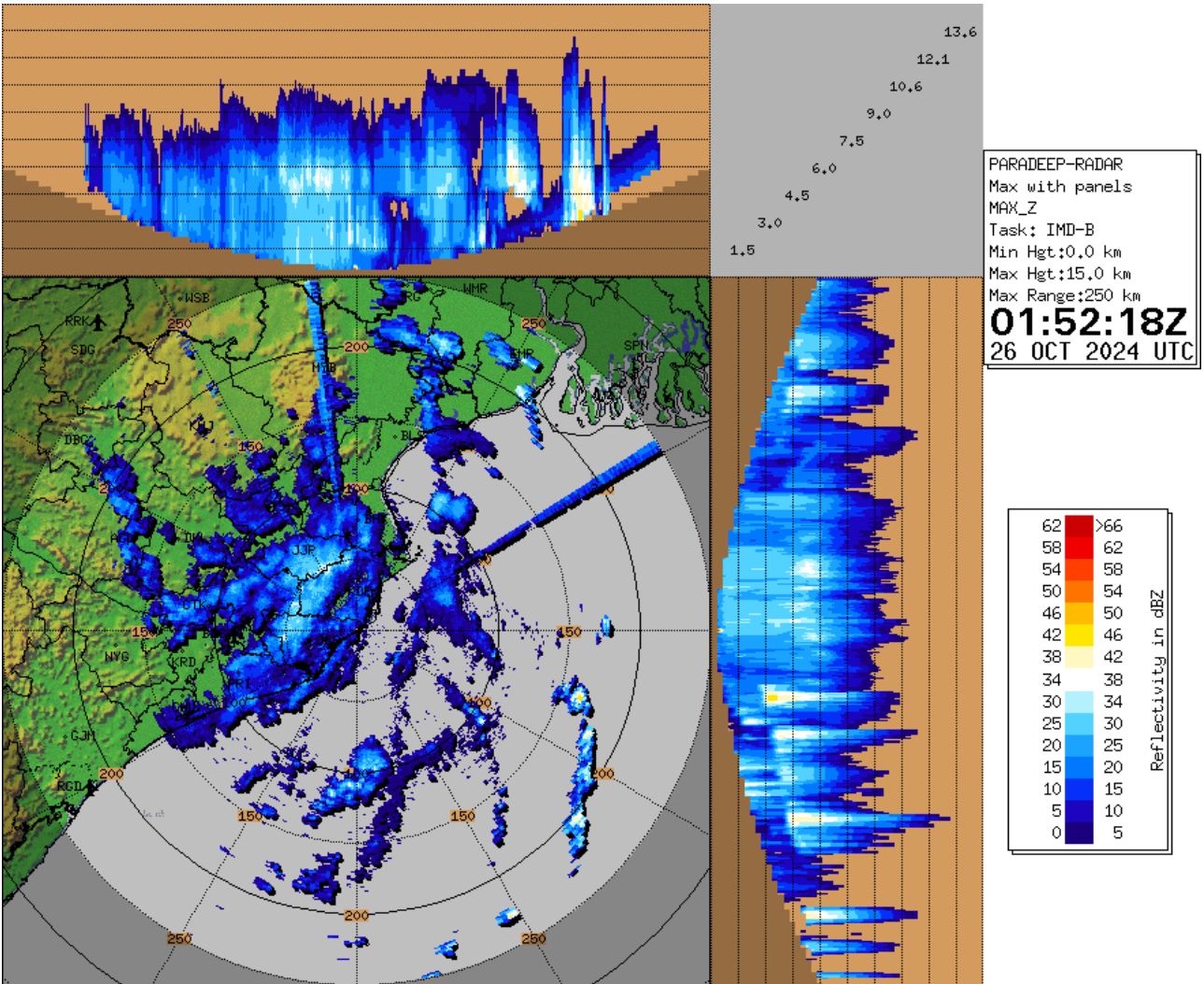
SATELLITE IMAGERY

SAT : INSAT-3DR IMG
IMG_TIR1_TEMP 10.8 um
LIC Mercator

26-10-2024/(0115 to 0142) GMT
26-10-2024/(0645 to 0712) IST

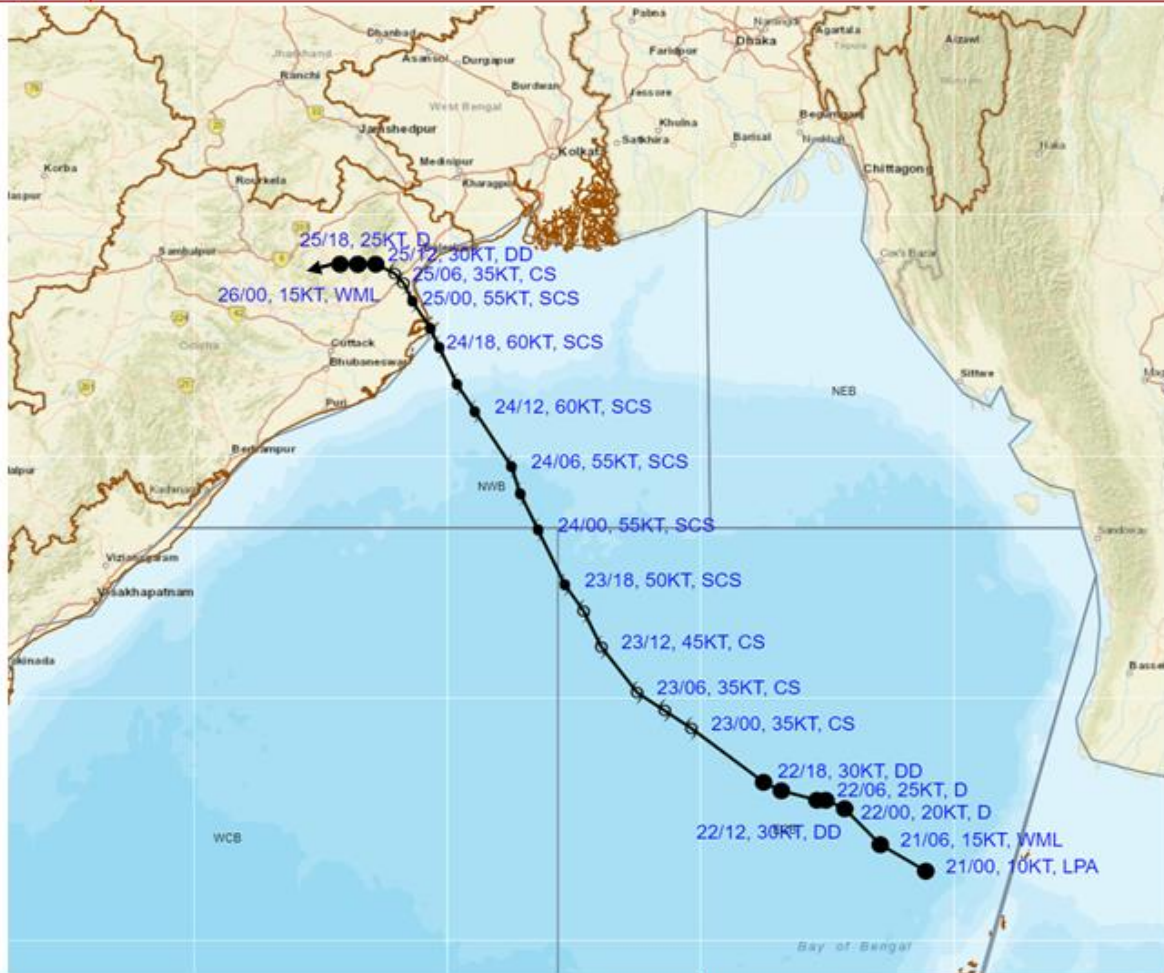


RADAR OBSERVATIONS (MAX_Z) OF DWR PARADIP






OBSERVED TRACK OF SEVERE CYCLONIC STORM 'DANA' OVER BAY OF BENGAL DURING 21st-26th OCTOBER 2024



DATE/TIME	: IN UTC
IST	: UTC + 0530
KT	: NAUTICAL MILE S/HOUR = 1.85 KM/HOUR
LPA	: LOW PRESSURE AREA
WML	: WELL MARKED LOW PRESSURE AREA
D	: DEPRESSION (17-27KT)
DD	: DEEP DEPRESSION (28-33 KT)
CS	: CYCLONIC STORM (34-47 KT)
SCS	: SEVERE CYCLONIC STORM (48-63 KT)
VSCS	: VERY SEVERE CYCLONIC STORM (64-89 KT)
ESCS	: EXTREMELY SEVERE CYCLONIC STORM (90-119 KT)
SuCS	: SUPER CYCLONIC STORM (≥120 KT)

-  LESS THAN 34 KT
-  34-47 KT
-  ≥ 48 KT
-  OBSERVED TRACK
-  FORECAST TRACK
-  CONE OF UNCERTAINTY